

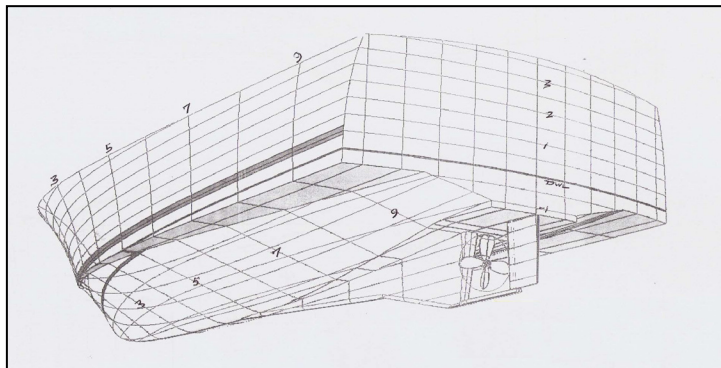
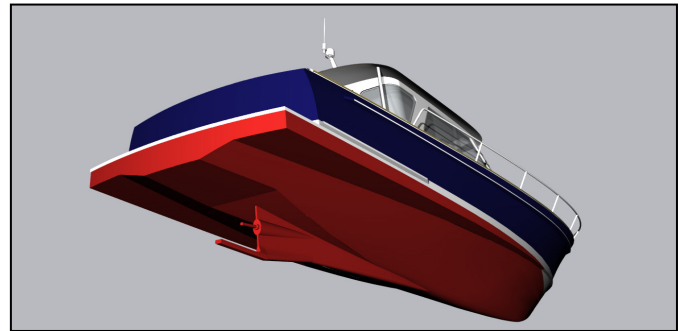
ABACO 40

INTELLIGENT CRUISING

HULL SHAPE DOES MATTER !!

The **Abaco 40** is the latest iteration of Mark Ellis Design's **Power Chine** hull form. First developed by Mark Ellis and introduced by Bruckmann Yachts in 1994, this innovative design has produced a series of very unique cruising yachts.

The **Ellis Power Chine** hull form was developed to make use of the good seakeeping characteristics of the Deep-V hull configuration while improving on that form's lack of good handling and poor fuel efficiency at lower planing speeds. This was realized by using the Deep-V's forward hull shape and altering the cross-sectional shape aft of the midsection to create broad horizontal flats at the chine (the corner of the topsides and bottom surfaces). These flats provide substantial planing lift surfaces aft on the hull not possible in the Deep-V configuration.



ride in rough seas, and exhibits great performance and seakeeping in the high cruising speed range.

The result is that the **Ellis Power Chine** hull is on a full plane at a low speed, **typically 10 knots**, requiring **less power and fuel burn** with **better handling characteristics** at low to moderate cruising speeds than Deep-V hulls, which typically fall off of plane at lower speeds. Deep-V's are poor performers under 18 knots and notably require larger engines that consume fuel heavily. Alternatively, the **Ellis Power Chine** hull form cruises happily and very efficiently at lower speeds, providing a more **comfortable**



The skag adds stability in a seaway while protecting the running gear

Put quite simply, the Deep-V hull is highly suitable for offshore speed but the **Ellis Power Chine** hull form is the smart choice for comfortable cruising in all conditions.

Performance Data

Cruising Load

Abaco 40

Single Cummins QSM11 670HP

1.485 : 1 - ZF325A

5 Blade 25" D x 26" P

Mark Ellis Design

RPM	Knots	GPH	NM/G
600	6	1.3	4.62
800	7.6	2.5	3.04
1000	9.3	4.4	2.11
1200	11.8	7.2	1.64
1400	14.0	10.1	1.39
1600	17.7	13.9	1.27
1800	21.3	18.4	1.16
2000	24.5	22.8	1.07
2200	26.7	29.9	0.89
2330	28.2	33.5	0.84

Data Conditions : seas calm, 250 gal. fuel (80%), 60 gal. water
Dinghy w/ motor, life raft, 150 lbs. gear
5 persons

